

THE BEST & STRONG GROUT

Epoxy Resin Free Flow Grout

DESCRIPTION

THE BEST & STRONG GROUT is an epoxy-based mortar grouting material. It is designed as a free flow mortar that can be poured easily into gap between steel base plate and foundation (concrete) to ensure complete surface contact and bond.

THE BEST & STRONG GROUT is suitable for any machinery installation such as installation of compressor, generator, turbine, heavy crane, transporting rails, and other heavy duty machines.

THE BEST & STRONG GROUT is supplied in 3 choices, depends on maximum thickness or gap provided 10-40 mm, 10-80 mm, and 10-120 mm.

COMPOTITION

THE BEST & STRONG GROUT contains one set of epoxy resin (resin and hardener) and filler that made of selected silica quartz aggregate.

ADVANTAGES

- High early strength gain
- High ultimate final strength
- Excellent to absorb vibration from dynamic loads
- Excellent bonding to various materials
- Non-shrink, ensure full contact
- Wide range chemical resistant

TECHNICAL DATA

	EM 40	EM 80	EM 120
Compressive Strength			
1 day	620	605	420
7 day	840	800	825
Tensile Strength	150	130	135
Flexural Strength	330	260	390

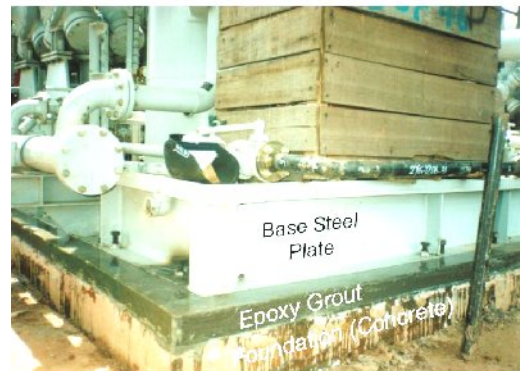
Note : Result above is measured in kg/cm^2 at $22\pm 2^\circ C$

Pot Life	15 – 20 minutes at $30^\circ C$
Specific Gravity	2.02 – 2.35 kg/liter
Setting Time	2 hour 30 minute at $30^\circ C$

APPLICATION

I. SUBSTRATE

- Substrate must be concrete with a minimum compressive strength of $225 kg/cm^2$ at 28 days.
- Concrete must be at least 14 days when grout is applied.
- Concrete must be clean, dry, and free from dirt, dust, oil, and other contamination.
- When needed, simple chipping or sand-blasting process should be done to surface of substrate until a hard and clean surface is achieved.

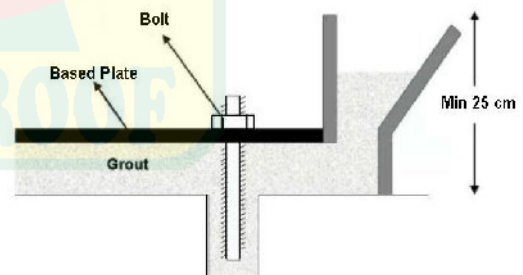


II. STEEL SURFACE

- Base plate or steel beam surface should be cleaned from oil, grease or scale. It can be achieved by brushing with steel brush manually or sand-blasting to surface.
- Where corrosion has occurred due to presence of chlorides or other aggressive chemicals, steel should be high pressure washed with clean water immediately after grit blasting to remove corrosion products from pits and imperfections with its surface.

III. FORMWORK

- Formwork is made of wood or low-strength mortar that will be removed later.



- Formwork must be constructed to be leak-proof by filling all gaps left with cement paste one day before the application.

IV. MIXING

- Mixing is done in plastic or steel container. Size of container depends on the quantity of mixing at one time.
- A slow speed powered mixer is recommended to use for small quantity. For larger quantity request, a high share vane mixer is suitable to use.
- Pour the hardener into the container, followed by resin and mix them up until a homogenous mix is achieved.
- Slowly add the filler into container and keep the stirrer or mixer revolving. Filler might be

Di distribusikan :
CV. ANUGERAH-SURABAYA

WWW.ANUGERAH WATERPROOF.COM

THE BEST & STRONG GROUT

Epoxy Resin Free Flow Grout

reduced when gap between concrete and steel is too tight. Minimum gap must be at least 10 mm.

- When all parts have been mixed properly, pour the mortar to place immediately and never keep the mixed-mortar for more than 20 minutes.

V. PLACING

- Mixed mortar should be placed in one direction only.
- Placing could be manual (gravity pressure) or mechanical (using pump). Selection of method of placing depends on length of beam or plate and gap width between steel and concrete.
- Placing must be done continuously and never let the joint occurs under the base plate. Before application, ensure the number of mixer and worker is suitable for planned speed and quantity of grout placed.
- Removing formwork is done 24 hours after whole grout has been placed.

PACKAGING

Type	Maximum Width	Packaging
THE BEST & STRONG GROUT	40 mm	20 kg set
THE BEST & STRONG GROUT	80 mm	25 kg set
THE BEST & STRONG GROUT	120 mm	30 kg set

STORAGE

THE BEST & STRONG GROUT should be stored at cool, dry, shaded and ventilated area, and far away from fire ignition. When stored properly, **THE BEST & STRONG GROUT** can be kept up to 12 months.

HEALTH AND SAFETY

THE BEST & STRONG GROUT contains chemicals which may be allergic to skin; therefore use of gloves is recommended. Splashes to skin is removed with water and soap. Ensure adequate ventilation during application.

